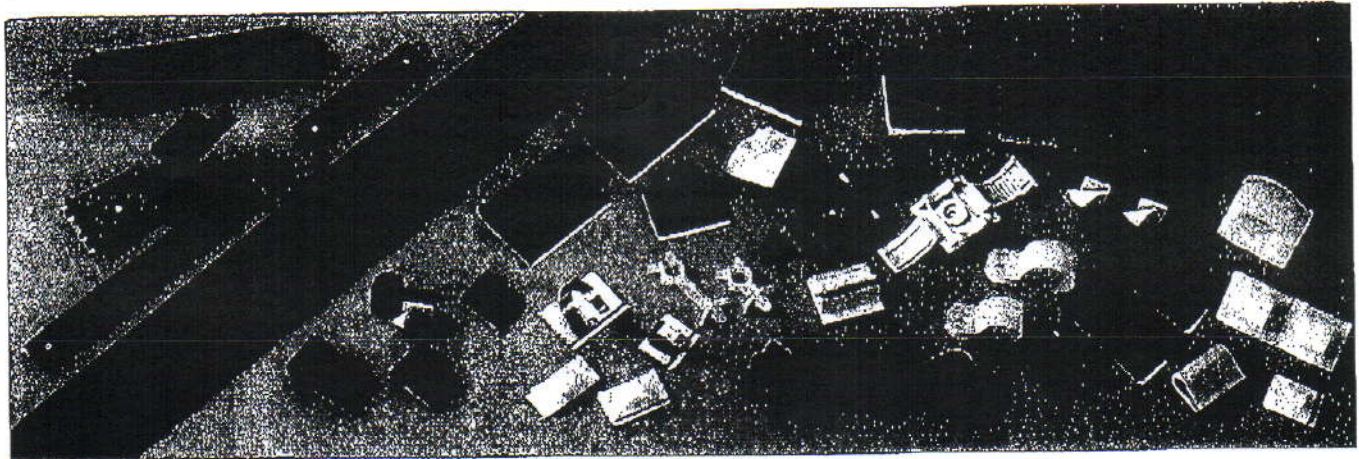


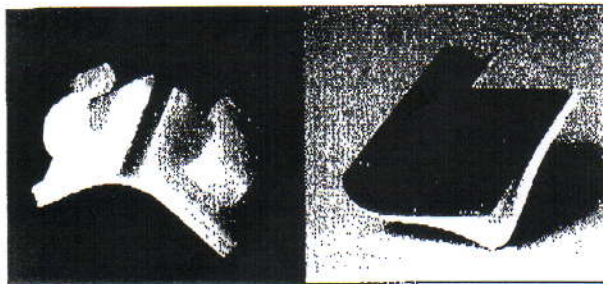
50

# PANDUIT® Wire Mounting Devices

## Wire/Cable Mounting Devices (used without cable ties)



## Adhesive Backed Mounting Devices

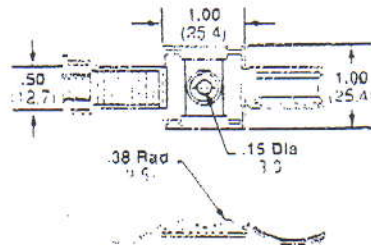
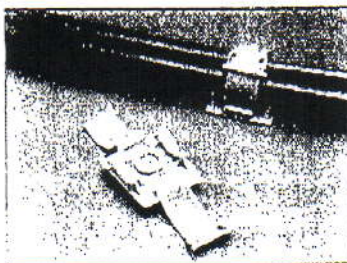


**Faster Liner Removal Speeds Installation and Lowers Install Cost**

- The adhesive backed mounts are offered either as one or two mounts per liner
- The two-up mounts are easily removed just by bending the mounts away from the liner
- The individual mounts have a handy tear tab for quick removal

## CLINCHER Adjustable Releasable Clamp

This clamp provides a fast and convenient method of securing bundles from .19" (4.8mm) up to .69" (17.5mm) diameter. It is available with adhesive backing or screw applied with one #6 (M3) screw.



The **CLINCHER** clamp is fast and easy to use . . .



Lift tab to release



Part Number	Max. Bundle Dia. In. (mm)	Dimensions inches (mm)				Material	Color	Where Used	Mounting Method	Max. Static Load Lbs. (g)	Packaging*			
		A	B	C	D						Std. Pkg. Qty.	Std. Ctn. Qty.	Bulk Pkg. Qty.	Bulk Ctn. Qty.
ARC.68-A-Q ARC.68-A-Q14	.69 (17.5)	See drawing				Polypropylene	White	Indoors	Adhesive Backed	50 (227)	25	250	100	1000
ARC.68-S6-Q ARC.68-S6-Q14							White TELCO Gray		#6 (M3) Panhead Screw	—	25	250	100	1000

\*Enter the Number of Pieces Required in Multiples of Packaging Quantities  
\*Part Numbers listed are for Standard Materials in Standard Package Quantity. For Bulk Package Part Numbers, see pages 127-128